



Réunion d'information/ Information meeting : LFO28

March 2026



LYCÉE FRANÇAIS
D'OSLO

DEN FRANSKE SKOLEN

1

BIENVENUE & OBJECTIF DE LA REUNION

WELCOME & PURPOSE OF THE MEETING



OBJECTIF DE LA REUNION

- Présenter les résultats de la consultation des parents LFO28
- Présenter les actions et la feuille de route 2026/2027 élaboré à partir des enseignements de la consultation

Nous répondrons aux questions à la fin de la réunion.

PURPOSE OF THE MEETING

- Present the result of the LFO28 parent consultation
- Present the 2026/2027 project plan derived from the consultation insights

We will take questions at the end of the meeting.



ÉTAPES CLÉS DU PROJET 2025-2026

PROJECT MILESTONES 2025/2026

2025

2026

Q1

Q2

Q3

Q4

Q1

Q2

Q3

Q4

JUN

The Board decided to secure Fornebu as new school site

The Board signed the 20 years contract with NPRO

AUG

Information meeting with staff/teachers

Information meeting community

SEP

NPRO submitted **re-zoning** application

OCT

Comments from competent authorities

NOV

QA sessions with community

LFO28 Parent consultation

FEB

NPRO submitted updated documentation

Comments from competent authorities

APR

NPRO submit final documentation

Bærum municipality circulate documents for public consultation (Høring)

SEP

Adoption by the municipal council or political committee (politisk behandling)

TBC

TBC

NPRO submits **construction permit** application

2

CONSULTATION DES PARENTS LFO28
PARENT CONSULTATION LFO28



Consultation feedback

- I. Are the results representative?
- II. What do the different community segments feel about the move?
- III. What are their main concerns?
- IV. What actions does the school derive from these?

Representative
for those that
have not
graduated

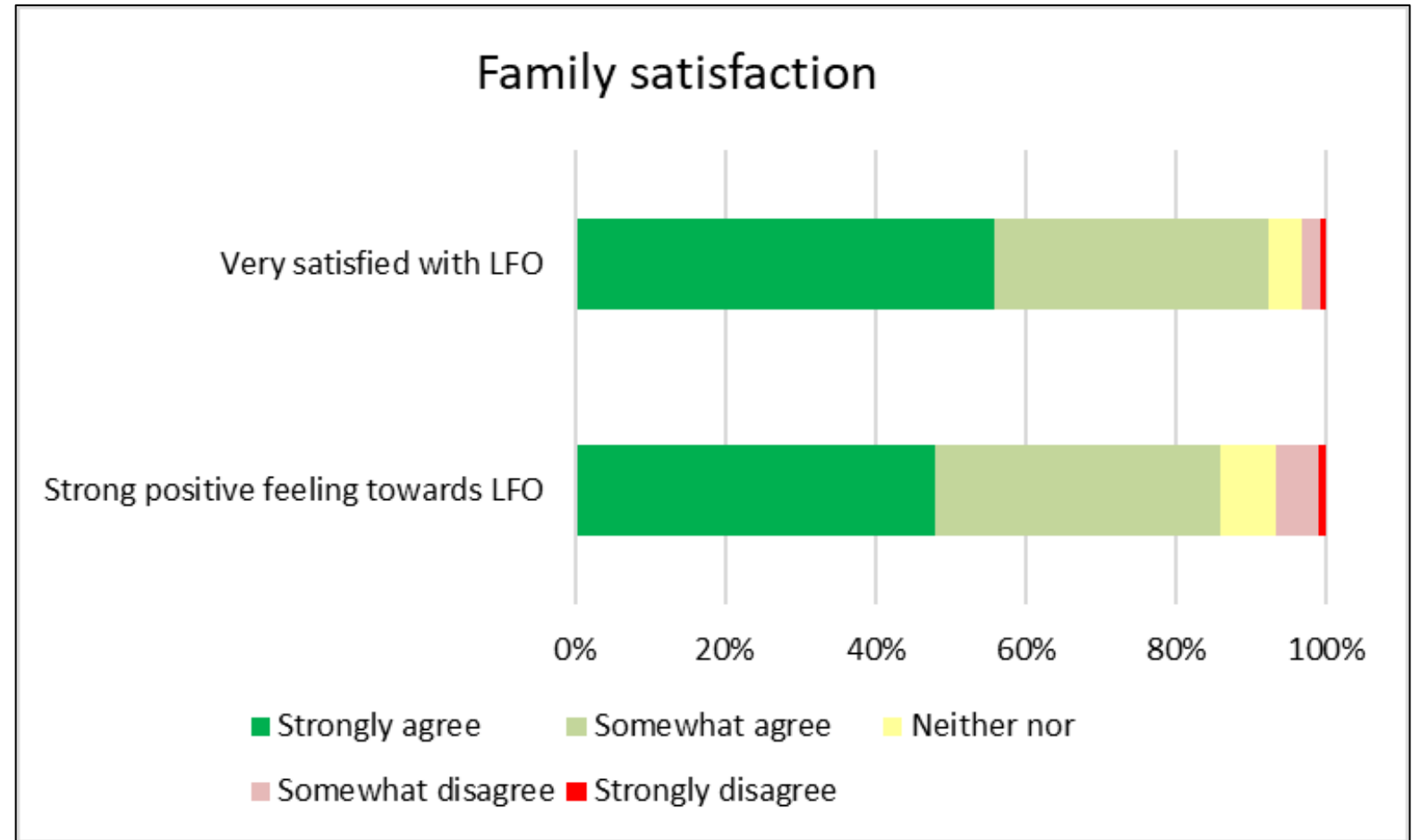
	Survey reply rate		
	Students	Replies	Reply %
M	98	68	69%
E	261	194	74%
C	190	122	64%
	549	384	70%
L	108	36	33%
Total	657	420	64%

Methodology

- ✓ Answers from families with several children have been multiplied and copied in the respective schools
- ✓ Answers from lycée-aged children are removed as they will be graduated by the fall of 2028. The remaining answers are named Moving Cohort (MC)

Highly satisfied families

- ✓ A big responsibility and good starting point.



Results more or less as anticipated

- ✓ 64% Followers
- ✓ 20% Undecided
- ✓ 15% Leavers (in 2028 mostly)
- ✓ Undecided group somewhat higher in Maternelle and smaller in College
- ✓ Families from Oslo North and Est have the highest share of Leavers

What is your overall reaction to the school's move to Fornebu?						
	Total	Very negative	Somewhat negativ	Neither/nor	Somewhat positive	Very positive
M	68	19%	22%	22%	26%	10%
E	193	13%	14%	23%	26%	23%
C	120	9%	9%	23%	38%	22%
	381	13%	14%	23%	30%	20%

27%

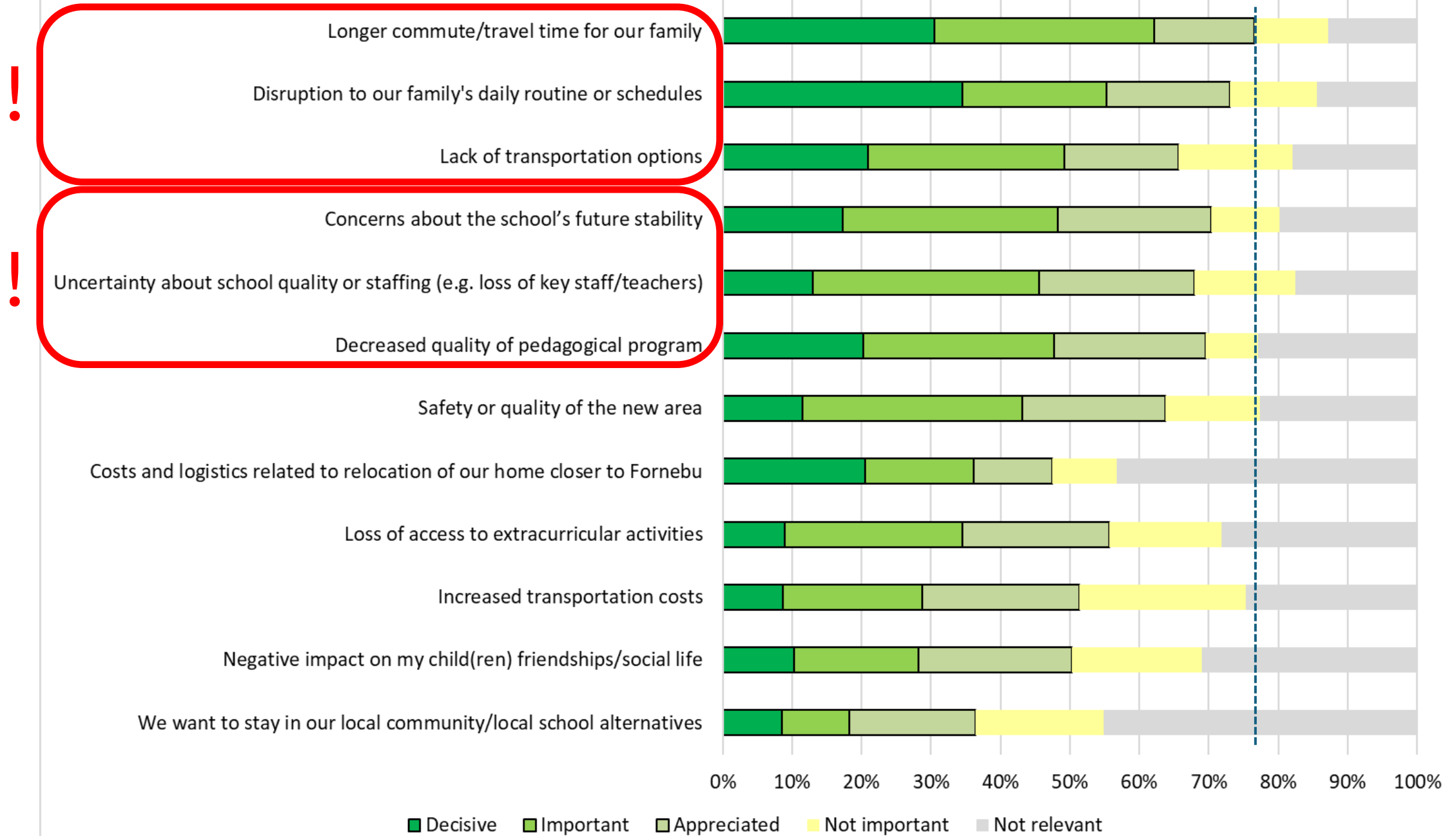
50%

Staying in LFO after the move to Fornebu						
	Total	Very unlikely	Somewhat unlikely	Neither/nor	Somewhat likely	Very likely
M	68	10%	7%	31%	16%	35%
E	193	7%	8%	21%	14%	50%
C	120	10%	4%	13%	26%	47%
	381	8%	7%	20%	18%	46%

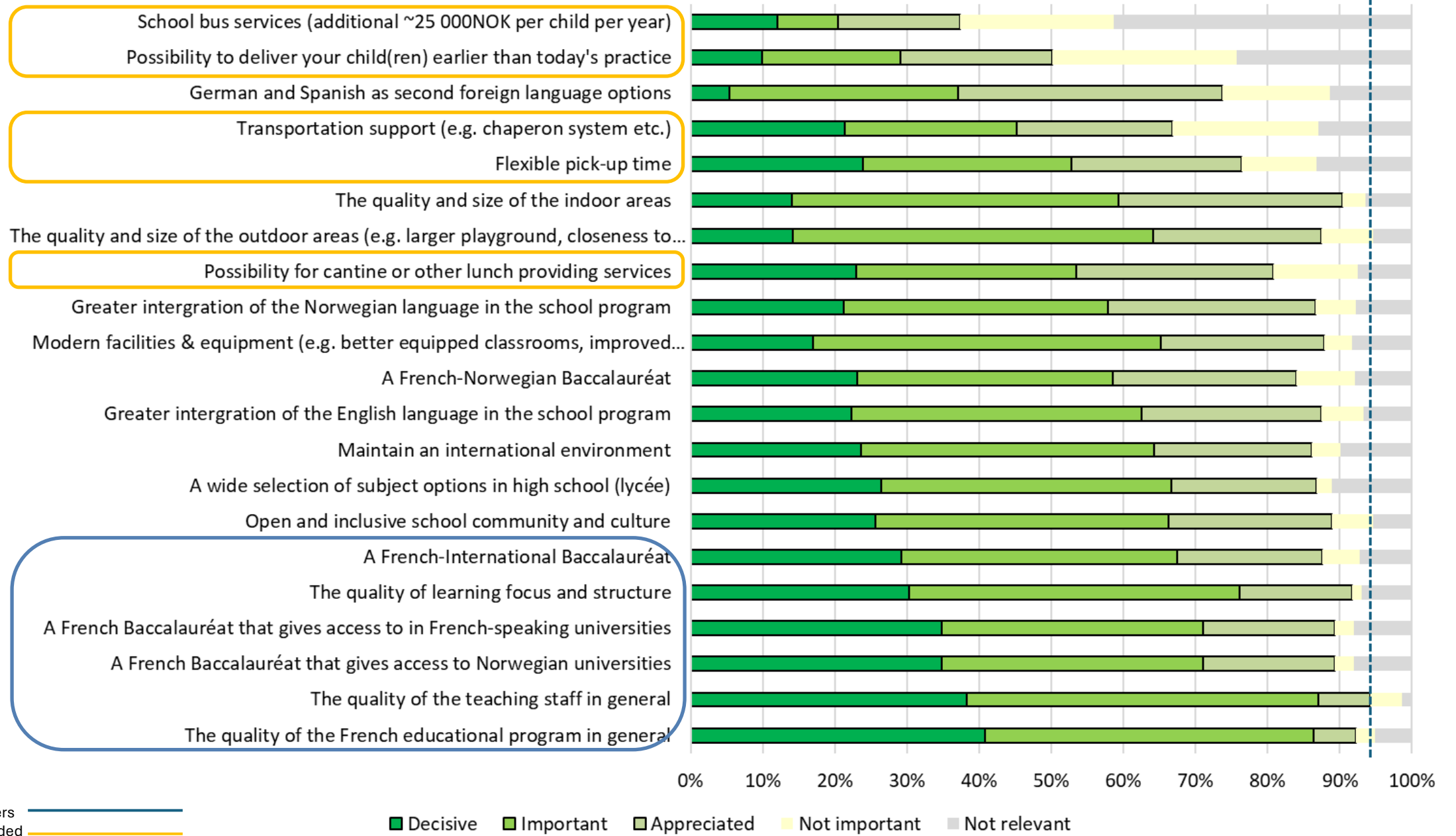
15%

64%

What are your main challenges or concerns regarding the move (MC)



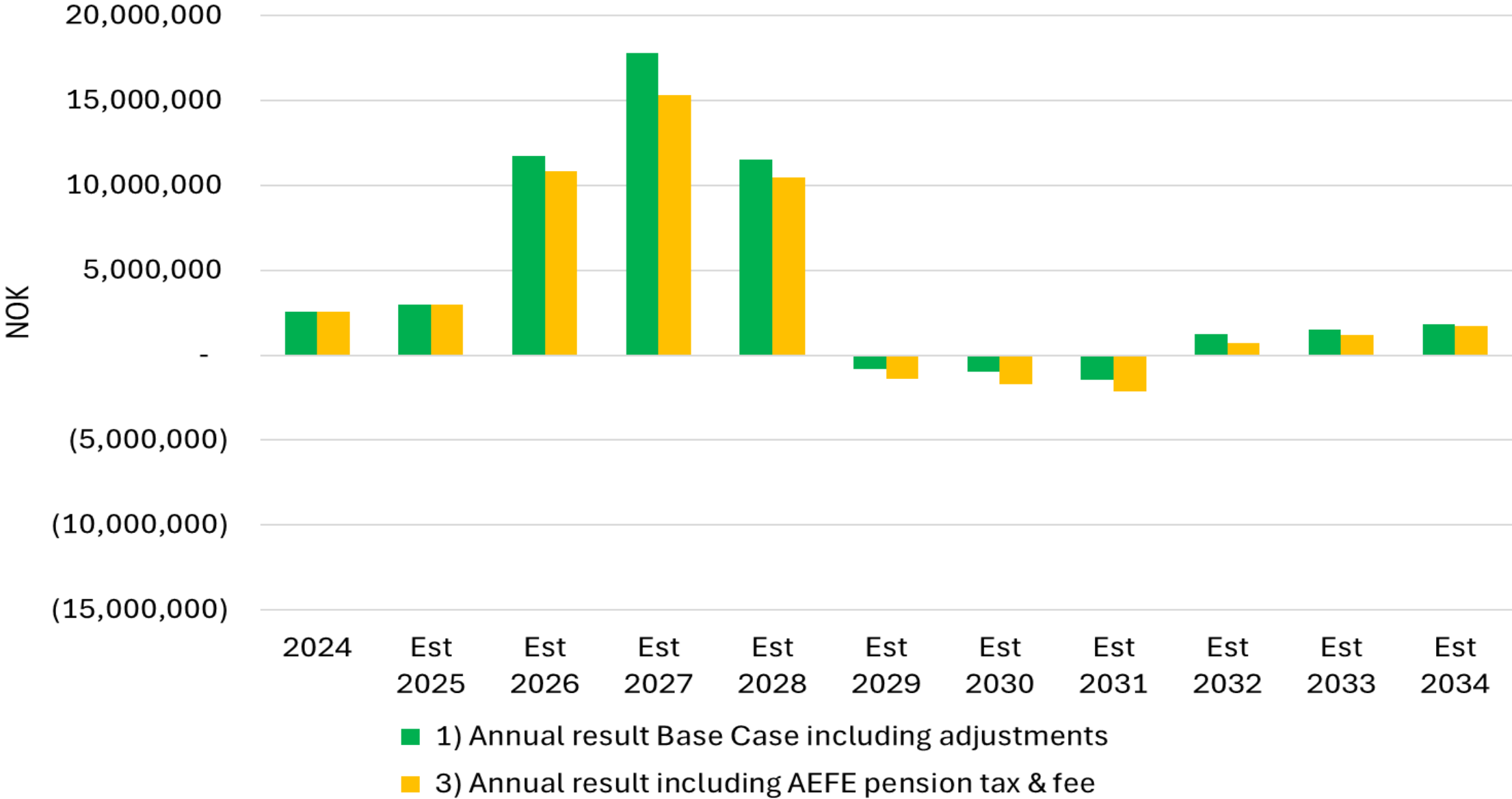
What factors would motivate you to keep your child(ren) enrolled with the LFO after the move (MC)



Decisive for Followers ———
 Decisive for Undecided ———

■ Decisive ■ Important ■ Appreciated ■ Not important ■ Not relevant

Result forecast with -15% students in 2028/29



SUMMARY

- ✓ Satisfactory 70% reply rate
- ✓ Very high satisfaction with the LFO among the families (> 90%)
- ✓ Leavers will mostly leave at the time of the move and not before (4% out of 15%)
- ✓ Leavers constitute 15% and Followers 65%, while the key will be what will happen with the Undecided 20%.
- ✓ Main concerns for Leavers and Undecided are daily routine, transportation options and commute time. Future school stability plays a role for Undecided.
- ✓ Motivating factors
 - ✓ Educational program, quality of teachers and structure most important
 - ✓ University access to Norway and France equally important
 - ✓ Bac International and Bac/Norwegian equally important
 - ✓ English and Norwegian considerably more important than German/Spanish
 - ✓ Commute issues are less important for Followers.



The board has established working groups to develop responses to these issues over the years.

Notably in the areas of:

- ✓ Transportation and opening hours
- ✓ Developing the quality of the educational program
- ✓ Keeping the best qualified staff after the move
- ✓ After school activities and canteen possibilities
- ✓ Securing the financial sustainability, also after the very unfortunate AEFÉ pension cost surprise.



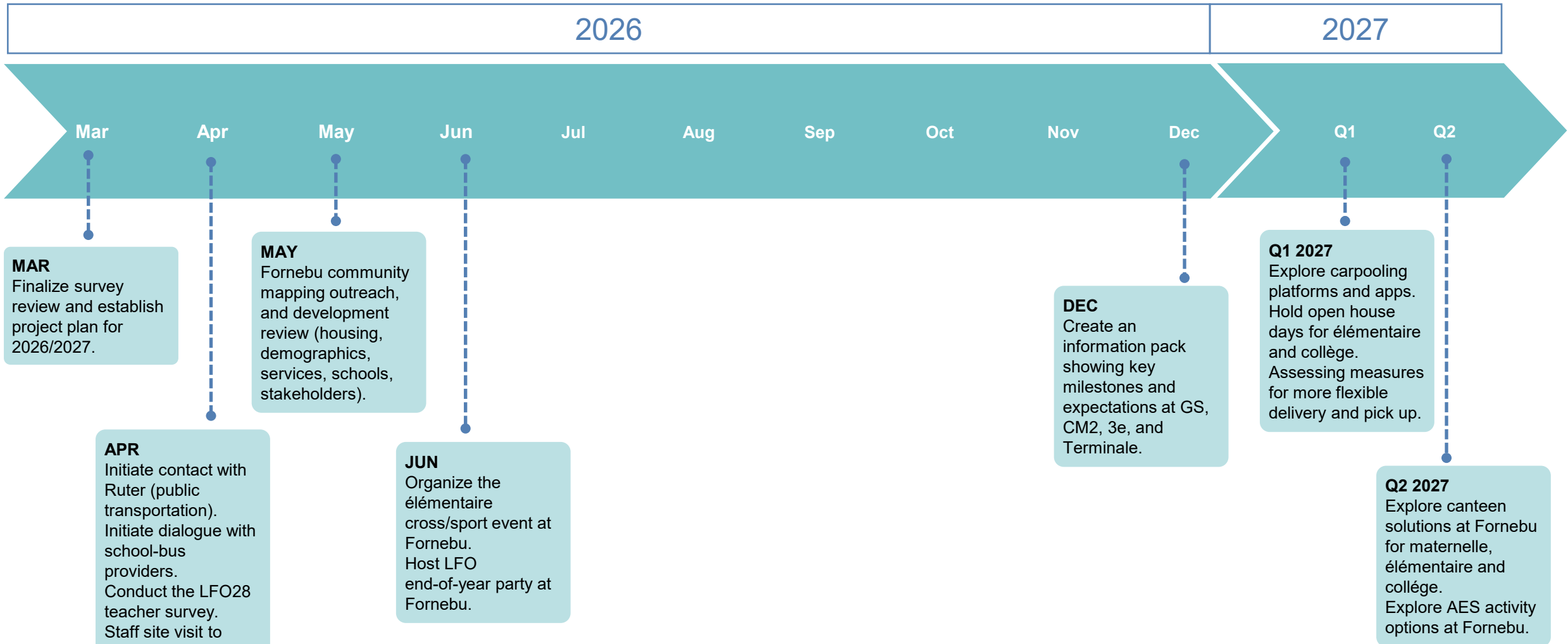
3

LES ACTIONS ET LA FEUILLE DE ROUTE 2026/2027
PROJECT PLAN 2026/2027



LES ACTIONS ET LA FEUILLE DE ROUTE 2026/2027

PROJECT PLAN 2026/2027



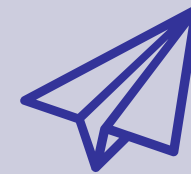
INITIATIVES COMPLÉMENTAIRES

- Nous fournirons des supports de réunion en plusieurs langues, quelle que soit la langue utilisée pendant la séance, afin que chacun puisse suivre et contribuer.
- Les résultats montrent que la stabilité des enseignants/personnels compte. Nous partagerons donc les résultats de l'enquête auprès des enseignants dès qu'ils seront disponibles, pour apporter aux familles de la visibilité sur la stabilité et la continuité des équipes.
- Nous renforcerons notre communication sur l'offre de l'établissement, afin de rendre les programmes, les parcours et les services d'accompagnement faciles à comprendre et à comparer.
- Nous tirerons parti du nouvel environnement de Fornebu, aires de jeu plus grandes, proximité des parcs et de la mer, en explorant et en mettant en œuvre des mesures qui favorisent l'apprentissage, le bien-être et les activités périscolaires (par exemple cours en plein air, clubs nature, programmes sportifs, etc.).

COMPLEMENTARY INITIATIVES

- We will provide meeting materials in multiple languages, regardless of the meeting language, to ensure everyone can follow and contribute.
- We can see from the result that the stability of teachers/staff matters. So, we will share teacher-survey results as soon as they are available to give families clarity on staff stability and continuity.
- We will strengthen our communication about the school's offerings. Making programs, pathways, and support services easy to understand and compare.
- We will leverage the new Fornebu environment, with its larger playgrounds, proximity to parks and the sea, by exploring and implementing measures that boost learning, wellbeing, and after-school activities (e.g. outdoor classes, nature clubs, sports programs etc.).

LFO28: A new chapter begins in school year 2028/2029



[WEB: WWW.LFO28.NO](http://WWW.LFO28.NO)

[EMAIL: LFO28@LFO.NO](mailto:LFO28@LFO.NO)